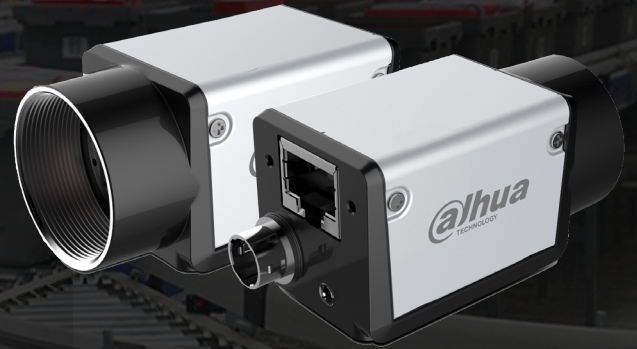


DH-MV-A5501M/CG20E

- 1Gbps Ethernet interface , max 100m transmission
- 128MB on-board frame buffer
- Support multiple image data formats
- Conform to CE, FCC, RoHS certifications
- Software trigger/Hardware trigger/Free run mode
- Compatible with GigE Vision V2.0 protocol and GenICam standard



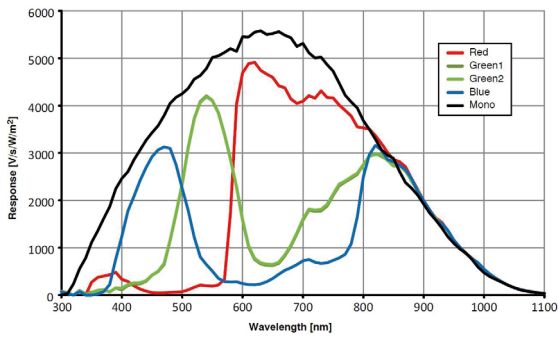
Specification

Model	Sensor	Sensor type	Shutter	Resolution	Frame rate (fps)	Bit depth	Interface	Mono/Color	Pixel size (μm)	Sensor size
DH-MV-A5501MG20E	PYTHON 5000	CMOS	Global	2592 x 2048	20	10	GigE, POE	Mono	4.8 x 4.8	1"
DH-MV-A5501CG20E	PYTHON 5000	CMOS	Global	2592 x 2048	20	10	GigE, POE	Color	4.8 x 4.8	1"

Model	DH-MV-A5501MG20E	DH-MV-A5501CG20E
Effective Pixels	5.3MP	
SNR	>38dB	
Dynamic Range	60dB	
GPIO	6 pin Hirose: 1 Opto-isolated input, 1 Opto-isolated output, 1 configurable input/output without opto isolation	
Image Format	Mono8/10/10Packed	BayerGB8/10/10Packed, YUV422Packed Mono8, BayerRG8/10/10Packed
Binning	Support	--
Gain	X1~X32	
Gamma	Range from 0 to 4, support LUT	
Exposure Time	1μs~1s	
Trigger Mode	Software trigger/Hardware trigger/Free run mode	
Image Buffer	64MB	
User Setting	Support two sets of user-defined configurations	
Dimensions	29mmx29mmx42mm(not including lens mount and rear case connector)	
Weight	88g	
Power Supply	POE/DC power supply by Hirose connector, with voltage range from 6V to 26V	
Power Consumption	12V≈3.8W	
Lens Mount	C	
Temperature	Storage temperature:-30° C~ + 80° C; Operation temperature:-30° C~+50° C	

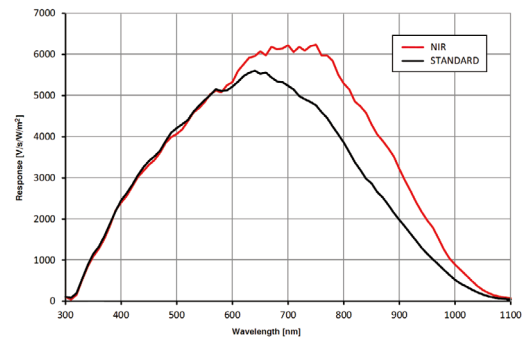
Spectrogram

A5501CG20E



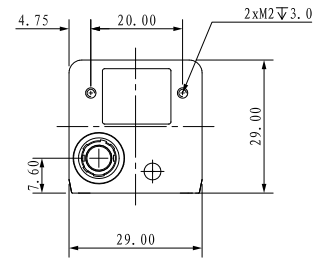
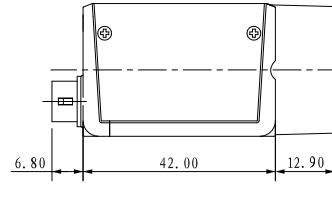
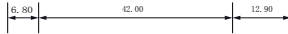
Quantum Efficiency Curve for Mono and Color

A5501MG20E

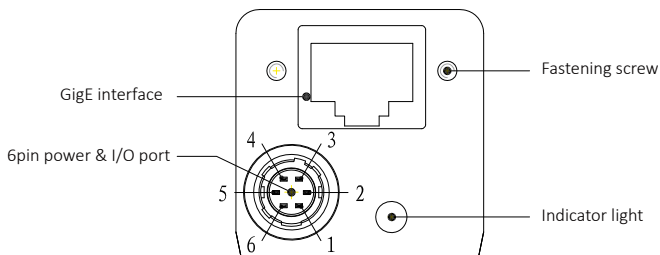


Quantum Efficiency Curve for Mono Sensor

Dimensions



IO Interface Instruction



Pin	Signal	Description
1	Power	DC 6V-26V input
2	Line1	Opto-isolated input
3	Line2	Configurable IO input/output
4	Line0	Opto-isolated output
5	IO GND	Opto-isolated ground
6	GND	Ground