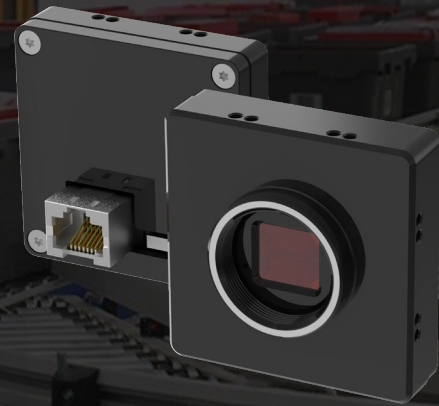


DH-MV-AB3600MG000E

- 1Gbps Ethernet interface , max 100m transmission
- 128MB on-board frame buffer
- Support multiple image data formats
- Software trigger/Hardware trigger/Free run mode
- Compatible with GigE Vision V2.0 protocol and GenICam standard

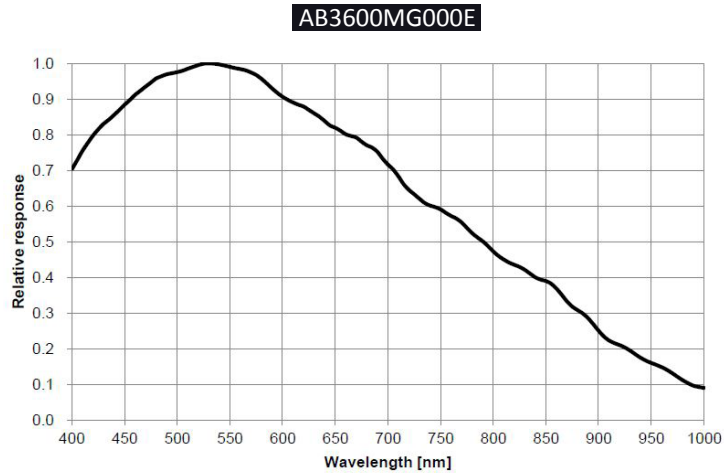


Specification

Model	Sensor	Sensor type	Shutter	Resolution	Frame rate (fps)	Bit depth	Interface	Mono/Color	Pixel size (μ m)	Sensor size
DH-MV-AB3600MG000E	IMX178	CMOS	Rolling	3072x2048	18	12	GigE	Mono	2.4 x 2.4	1/1.8"

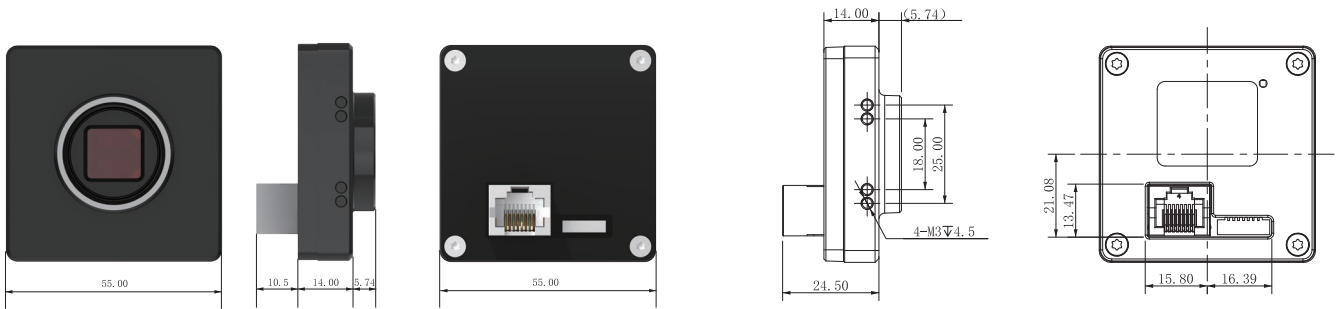
Model	DH-MV-AB3600MG000E
Effective Pixels	6.2MP
SNR	>38dB
Dynamic Range	60dB
GPIO	8 pin socket interface: 1 Opto-isolated input, 1 Opto-isolated output, 1 output without opto isolation
Image Format	Mono8/10/10Packed/12/12Packed
Binning	Support
ROI	Support
Gain	X1~X32
Gamma	Range from 0 to 4, support LUT
Exposure Time	25 μ s~1s
Sync mode	Software trigger/Hardware trigger/Free run mode
Image Buffer	64MB
User Setting	Support two sets of user-defined configurations
Dimensions	55mmx55mmx14mm
Weight	80g
Power Supply	DC power supply by 8 pin Socket connector, with voltage range from 6V to 26V
Power Consumption	12V \approx 3.4W
Lens Mount	C
Temperature	Storage temperature: -30 $^{\circ}$ C~ + 80 $^{\circ}$ C; Operation temperature: -30 $^{\circ}$ C~+50 $^{\circ}$ C

Spectrogram

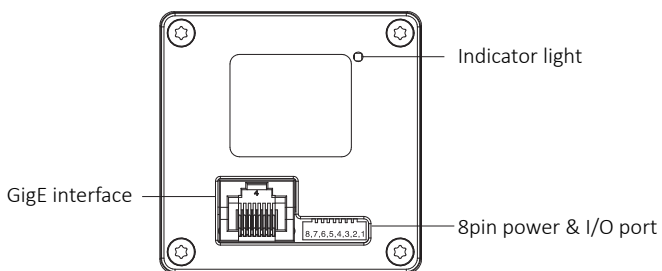


Quantum Efficiency Curve for Mono Sensor

Dimensions



IO Interface Instruction



Pin	Signal	Description
1	Power	DC 6V-26V input
2	GND	Ground
3	Line2	Output
4	Line1	Opto-isolated input
5	Line0	Opto-isolated output
6	IO GND	Opto-isolated ground
7	-	-
8	-	-