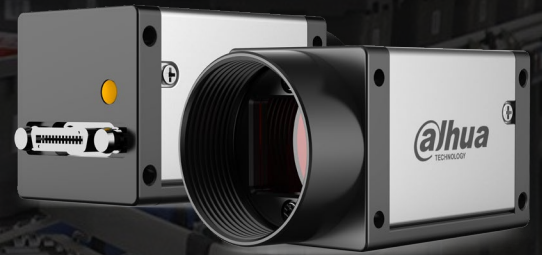


DH-MV-A5201M/CK402E

- CameraLink interface, support Base mode
- Support Software trigger/Hardware trigger/Free run mode
- Support multiple image data format output, ROI, mirroring, etc
- Conform to CameraLink V2.0 protocol and GenICam standard
- Conform to GenCP V1.1 Standard Communication Protocol
- Support for PoCL
- CE,FCC,UL,RoHS certification



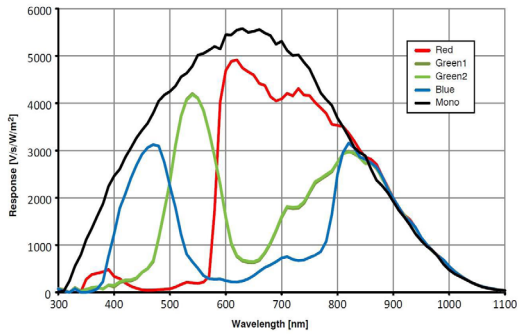
Specification

Model	Sensor	Sensor type	Shutter	Resolution	Frame rate (fps)	Bit depth	Interface	Mono/Color	Pixel size (μm)	Sensor size
DH-MV-A5201MK402E	Python 2000	CMOS	Global	1920x1200	37.8	10	CameraLink	Mono	4.8 x 4.8	2/3"
DH-MV-A5201CK402E	Python 2000	CMOS	Global	1920x1200	37.8	10	CameraLink	Color	4.8 x 4.8	2/3"

Model	DH-MV-A5201MK402E	DH-MV-A5201CK402E
Effective Pixels	2.3MP	
SNR	>38dB	
Dynamic Range	60dB	
GPIO	CameraLink interface: camera control and image transmission; support base mode	
Colck	32M/48M/64M/80M	
Image Format	Mono: Mono8/10	Color: Bayer8/10
Binning	--	
Gain	0dB~15.56dB	
Gamma	--	
Exposure Time	16μS~1S	
Trigger Mode	Software trigger/Hardware trigger/Free run mode	
Image Buffer	--	
User Setting	Support two sets of user-defined configurations	
Dimensions	29mmx29mmx43.8mm(not including lens mount and rear case connector)	
Weight	80g	
Power Supply	PoCL	
Power Consumption	≈2.3W	
Lens Mount	C	
Temperature	Storage temperature:-30° C~ + 80° C; Operation temperature:-30° C~+50° C	

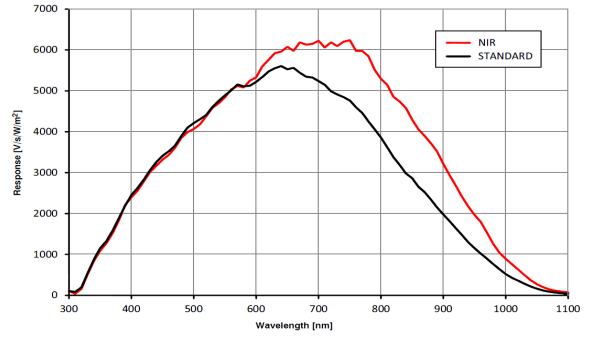
Spectrogram

A5201CK402E



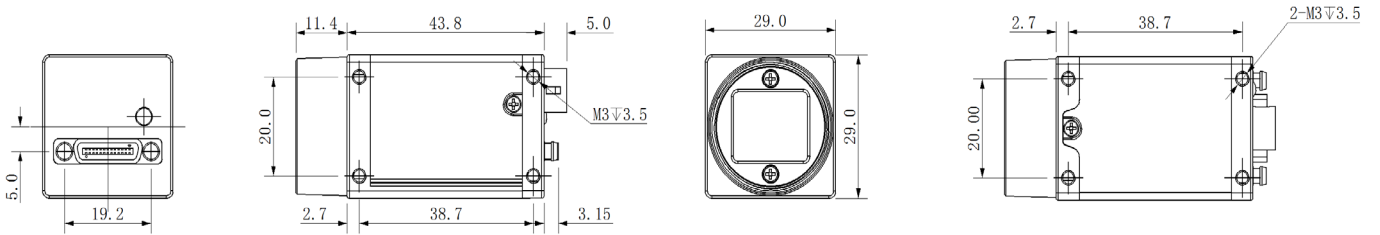
Quantum Efficiency Curve for Color Sensor

A5201MK402E

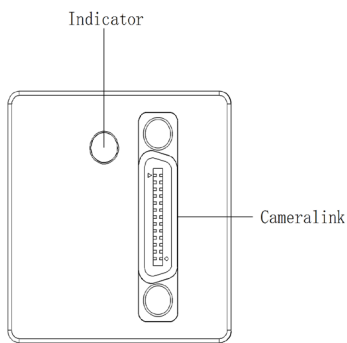


Quantum Efficiency Curve for Mono Sensor

Dimensions



IO Interface Instruction



Pin	Signal	Description
No I/O interface		