

# IB40



## OVERVIEW

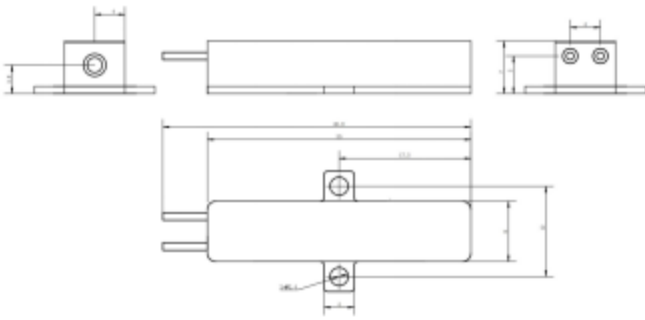
The Erbium glass laser operates at a wavelength of 1.54  $\mu\text{m}$  with a repetition rate of 1 kHz. It is classified as Class 1 eye-safe, ensuring a safe working environment. It has a small size, lightweight design, and high reliability. With high optical-to-electrical conversion efficiency, it delivers outstanding performance and can operate in harsh working conditions.



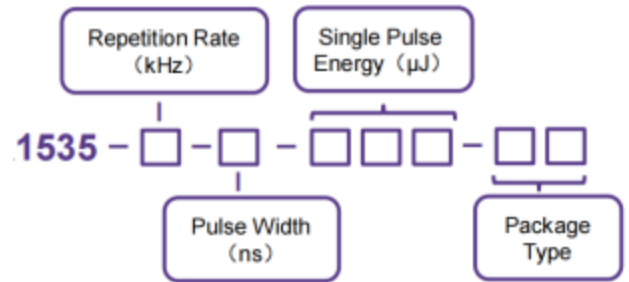
## TECHNICAL SPECIFICATIONS

|                          |  |
|--------------------------|--|
| Wavelength               | 1535 nm  |
| Pulse energy (Min./Typ.) | $\geq 40 \mu\text{J}$  |
| Pulse width, Typ.(FWHM)  | 4 ns   |
| Pulse repetition rate    | 1KHz   |
| Pulse stability          | 10%  |
| Spots diameter           | 0.2 mm   |
| Beam divergence angle    | $< 15 \text{ mrad}$  |
| Spots mode               | TEM00  |
| Operating temperature    | $-45 \text{ }^\circ\text{C} \sim +65 \text{ }^\circ\text{C}$ |
| Storage temperature      | $-55 \text{ }^\circ\text{C} \sim +85 \text{ }^\circ\text{C}$ |
| Impact                   | 1500 G, 0.5 ms   |
| Vibration                | 20~2000 Hz/20 G  |
| Life span                | $> 50$ million shots   |
| Dimension (mm)           | 25x8x7   |
| Weight                   | 8 g  |
| Voltage                  | 2 V  |
| Current                  | 5A   |
| Pulse width              | $\geq 0.3 \text{ ms}$  |

## MECHANICAL DIMENSION (mm)

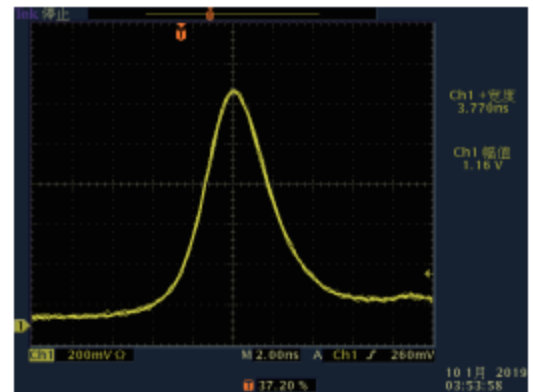


## PART NUMBERING SCHEMA

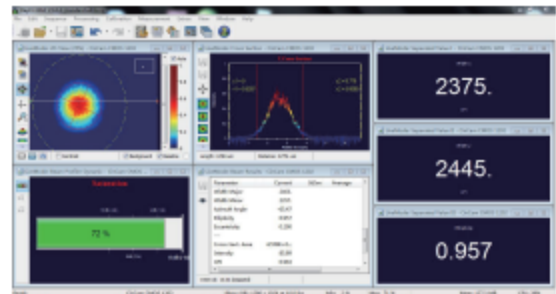


## PIN DESCRIPTIONS

| Pin | Function  |
|-----|-----------|
| 1   | Laser (+) |
| 2   | Laser (-) |



Typical Pulse



Beam Profile

