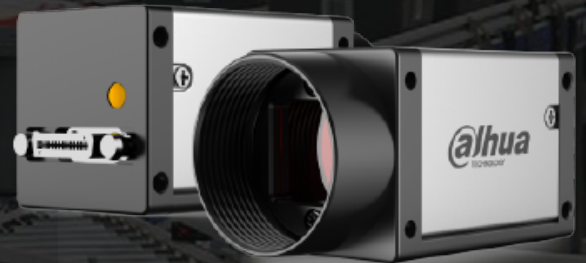


▲ A7500MK402E

- 1.8Gbps (maximum) bandwidth CameraLink interface
- Support multiple image data formats
- Conform to CE, FCC, RoHS certifications
- Software trigger/Hardware trigger/Free run mode
- Conforms to CameraLink V2.0 protocol and GenICam standard



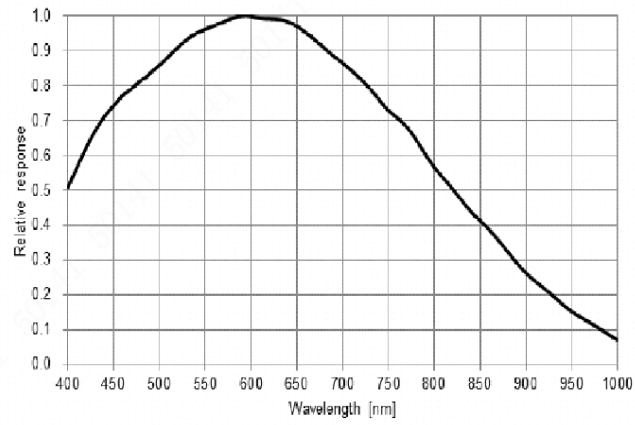
Specification

Model	Sensor	Sensor type	Shutter	Resolution	Frame rate (fps)	Bit depth	Interface	Mono/ Color	Pixel size (μ m)	Sensor size
A7500MK402E	IMX264	CMOS	Global	2448*2048	37.2	10	CameraLink	Mono	3.45*3.45	2/3"

Model	A7500MK402E
Effective Pixels	5MP
SNR	>38dB
Dynamic Range	70dB
GPIO	CameraLink is used for camera control and data transmission
Image Format	Mono:Mono8/10
Binning	Not support
Gain	0dB~15.56dB
Gamma	Not support
Exposure Time	16uS~1S
Trigger Mode	Software trigger/Hardware trigger/Free run mode
Image Buffer	64MB
User Setting	Support two sets of user-defined configurations
Dimensions	29mm*29mm*43.8mm(not including lens mount and rear case connector)
Weight	80g
Power Supply	PoCL power supply
Power Consumption	2.303W
Lens Mount	C
Temperature	Storage temperature:-30° C~ + 80° C; Operation temperature:-30° C~+50° C

Spectrogram

A7500MK402E



Quantum Efficiency Curve for Mono Sensor

Dimensions

