

IB001 / 002 / 003



OVERVIEW

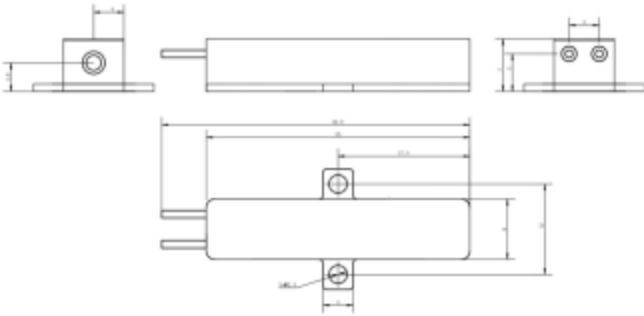
The erbium glass laser emits at a eye-safe wavelength of 1.54 μ m and offers high beam quality within the atmospheric window. With a pulse energy of 100-300 μ J, it is suitable for eye-safe laser ranging. This laser exhibits low power consumption, high peak power, narrow pulse width, compact size, and does not require temperature control. It has been proven to be a safe, efficient, and stable eye-safe laser solution.



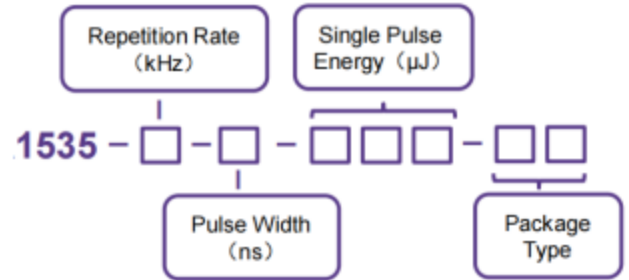
TECHNICAL SPECIFICATIONS

Wavelength	1535 nm	1535 nm	1535 nm
Pulse energy (Min./Typ.)	$\geq 100 \mu\text{J}$	$\geq 200 \mu\text{J}$	$\geq 300 \mu\text{J}$
Pulse width, Typ.(FWHM)	3.5 ns	3.5 ns	3.5 ns
Pulse repetition rate	1~20 Hz	1~10 Hz	1~20 Hz
Pulse stability	10%	10%	10%
Spots diameter	0.2 mm	0.2 mm	0.2 mm
Beam divergence angle	10 mrad	10 mrad	10 mrad
Spots mode	TEM00	TEM00	TEM00
Operating temperature	-45 °C~+65 °C	-45 °C~+65 °C	-45 °C~+65 °C
Storage temperature	-55 °C~+85 °C	-55 °C~+85 °C	-55 °C~+85 °C
Impact	1500 G, 0.5 ms	1500 G, 0.5 ms	1500 G, 0.5 ms
Vibration	20~2000 Hz/20 G	20~2000 Hz/20 G	20~2000 Hz/20 G
Life span	>50 million shots	>50 million shots	>50 million shots
Dimension (mm)	25x8x7	25x8x7	25x8x7
Weight	8 g	8 g	8 g
Voltage	2 V	2 V	2 V
Current	6 A	12 A	12 A
Pulse width	$\geq 2 \text{ ms}$	$\geq 1.8 \text{ ms}$	$\geq 2.5 \text{ ms}$

▶ MECHANICAL DIMENSION (mm)

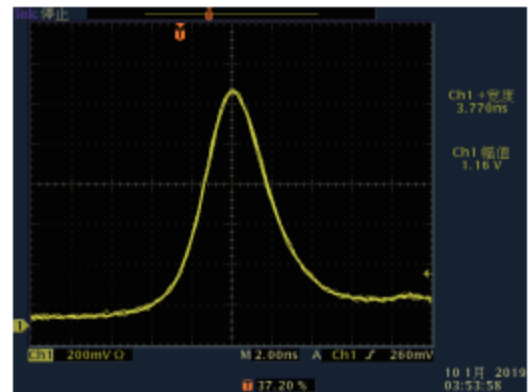


▶ PART NUMBERING SCHEMA

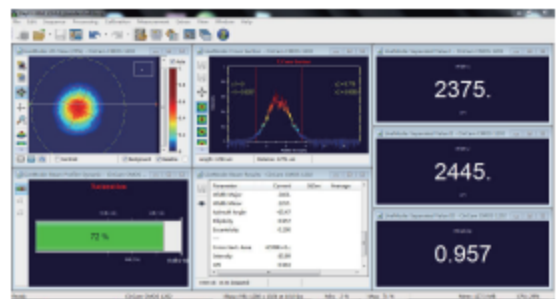


▶ PIN DESCRIPTIONS

Pin	Function
1	Laser (+)
2	Laser (-)



Typical Pluse



Beam Profile

